



Preserving a heroic heritage

Preliminary study on land improvements for the vine walls of Lavaux

Margaux Delalex, Project Manager in Heritage Preservation at Lavaux World Heritage



A living cultural landscape under pressure

Lavaux is 450km of vine walls, 10'000 terraces. Not only do the walls constitute an important network. They are also an essential production tool.

Recently, the wine-growing industry has witnessed considerable changes namely fewer winegrowers and thus fewer wine estates. This leads to a decreasing maintenance of vine walls and makes the preservation of the integrity and authenticity of the UNESCO site an economic, safety and heritage issue.

Other aggravating factors include:

- ↪ Economic challenges (high production costs, increased international competition, declining consumption)
- ↪ Climate events (periods of drought and more intense rainfall) increasing the impact on vine wall degradation and financial burden to winemakers
- ↪ Proximity to dense and diverse transportation networks



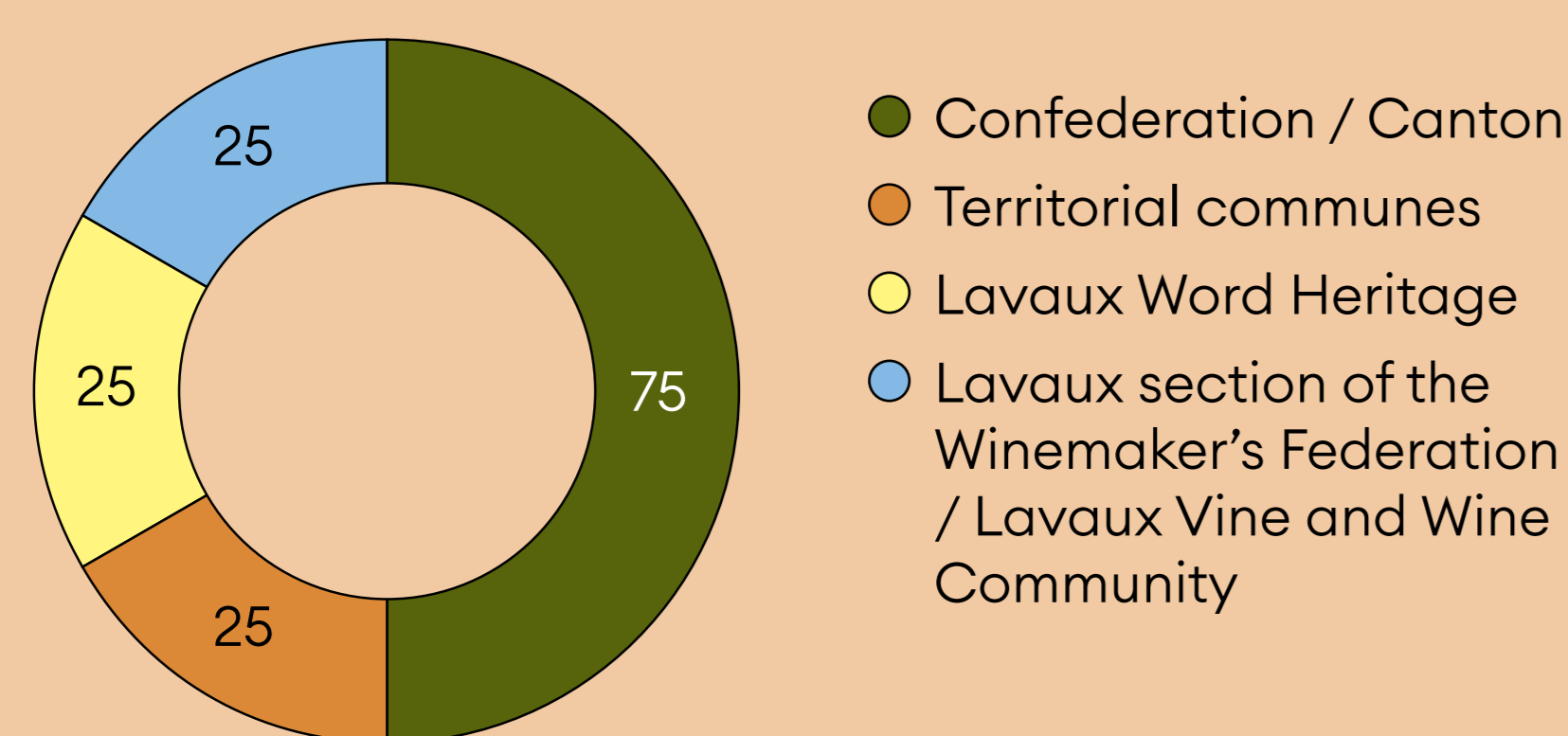
Major support from the professional defense of winegrowers

The maintenance and repair of vine walls is almost exclusively the vineyard owner's responsibility. The costs associated with this work are particularly high.

The Lavaux section of the Winemaker's Federation has decided to take action and launch a land improvement initiative. This initiative, widely supported by the territorial communes as well as by the site manager, Lavaux World Heritage, aims to ensure the long-term preservation of the vineyard's terraced structure and provide economic support to winegrowers, in the Lavaux AOC (controlled designation of origin) perimeter.

*“Hats off to you guys, great work!
Thanks to you, we don't have
to rebuild the vineyard, but we'll take
great pleasure in maintaining it.”*

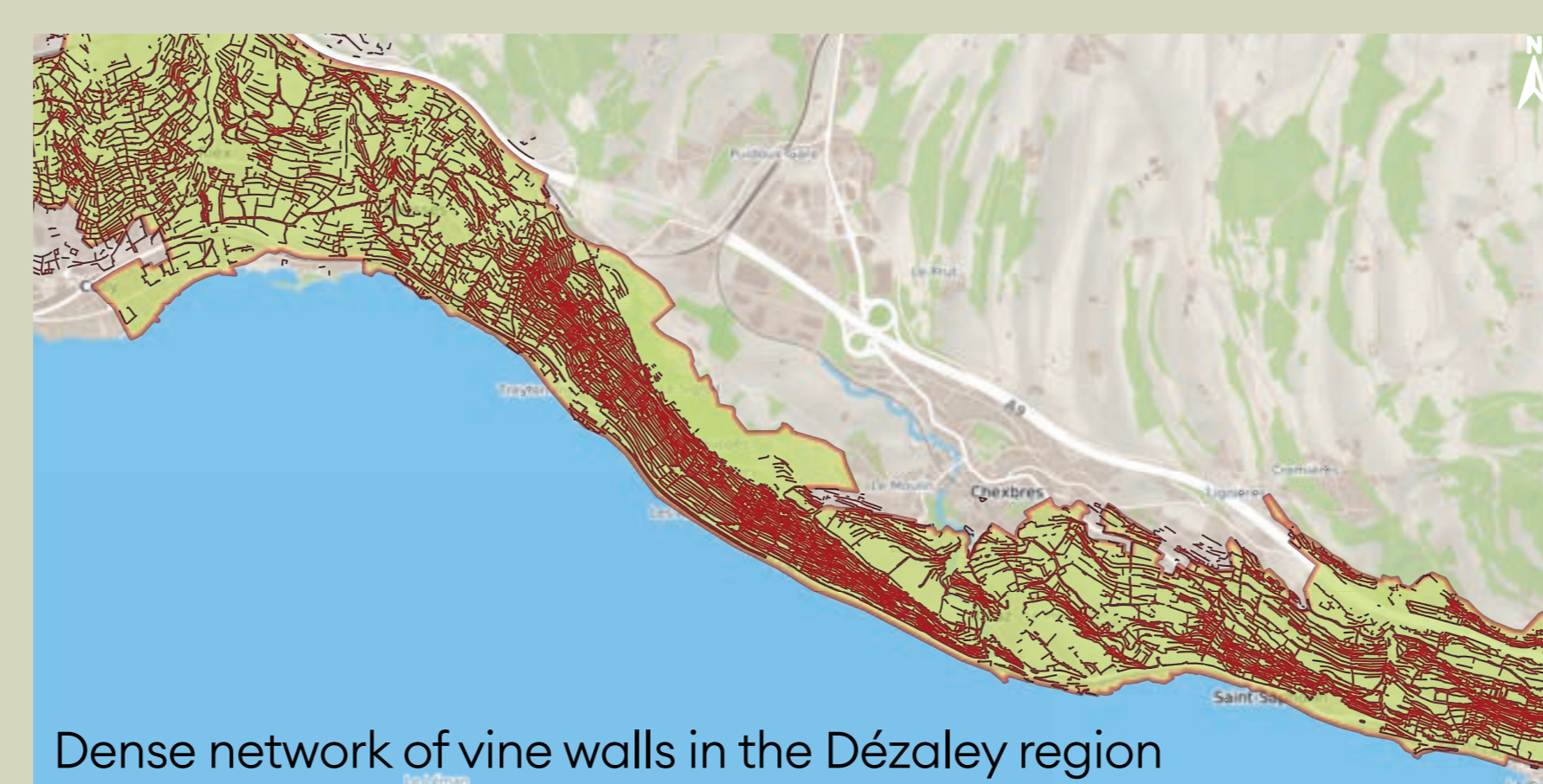
Henri Chollet, winemaker and producer of Lavaux



Essential implication from key players

The importance of preserving this network of vine walls is high. Therefore, the preliminary study benefits from a financial contribution of 50% by the Cantonal Direction for Agriculture and Viticulture and the Federal Office for Agriculture.

The remaining 50% is provided by the relevant regional and local stakeholders, namely the Lavaux section of the Winemaker's Federation, the Lavaux Vine and Wine Community, the Lavaux Intercommunal Commission, and LPm.



Phasing out of the study

The preliminary study began in June 2025 and will be concluded at the end of 2027. The main phases include:

1. Informing winemakers and collecting basic data;
2. Establishing a diagnosis and static inventory of walls (locality, geometry, attributes and characteristics);
3. Establishing a dynamic inventory of walls through sampling (field survey, wall inspection);
4. Estimating total repair costs and planning the work;
5. Presentation to property owners and validation from the federal expertise.

In a nutshell

The ultimate goal is to establish a framework and methodology to ensure additional funding for the maintenance and restoration of vine walls in Lavaux.

± 60%

of total costs could be covered by potential financial contributions.

27%

from the Confederation and Canton respectively + 3-6% for walls located within a landscape inventory (Federal Inventory of Landscapes).



Further information in French